

SmartFrame® SkewedAngle (SFSA)

SmartFrame SkewedAngles are used for many situations of attaching cold formed steel framing members together at a 45 or 135 degree angle

The SmartFrame UtilityAngles are available in (3) leg size patterns and in lengths of 3.125"(362), 5.75"(600), 7.75"(800), 9.75"(1000) & 11.75"(1200).

Custom sizes available

UtilityAngles products are manufactured in 54mils (16g), 68mils (14g) & 97mils (12g).

Part numbers:

(SFSA-Leg size(2"x2") Mills

Length

SFSA22-54-362	SFSA22-68-362	SFSA22-97-362
SFSA22-54-600	SFSA22-68-600	SFSA22-97-600
SFSA22-54-800	SFSA22-68-800	SFSA22-97-800
SFSA22-54-1000	SFSA22-68-1000	SFSA22-97-1000
SFSA22-54-1200	SFSA22-68-1200	SFSA22-97-1200

(SFSA-Leg size(1.5"x4") Mills

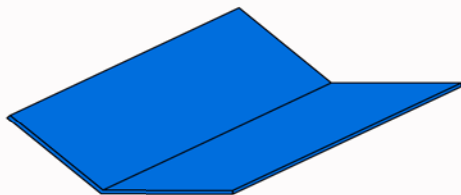
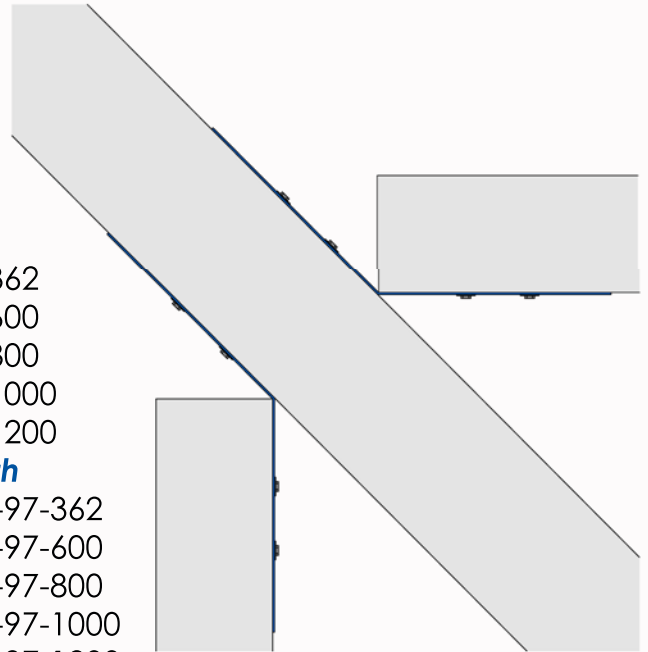
Length

SFSA154-54-362	SFSA154-68-362	SFSA154-97-362
SFSA154-54-600	SFSA154-68-600	SFSA154-97-600
SFSA154-54-800	SFSA154-68-800	SFSA154-97-800
SFSA154-54-1000	SFSA154-68-1000	SFSA154-97-1000
SFSA154-54-1200	SFSA154-68-1200	SFSA154-97-1200

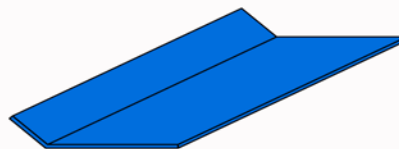
(SFSA-Leg size(4"x4") Mills

Length

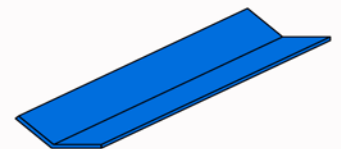
SFSA44-54-362	SFSA44-68-362	SFSA44-97-362
SFSA44-54-600	SFSA44-68-600	SFSA44-97-600
SFSA44-54-800	SFSA44-68-800	SFSA44-97-800
SFSA44-54-1000	SFSA44-68-1000	SFSA44-97-1000
SFSA44-54-1200	SFSA44-68-1200	SFSA44-97-1200



SFSA44
4" x 4"



SFSA154
1.5" x 4"



SFSA1515
1.5" x 1.5"